

# Taian kateitei, ma ana bwai te botanaomata n taabo ni maeka



Taian kukune ibukin te Betebeke man Botakin Aaba n te Aonnaba (te United Nations) Te Rabwata ae e kaainaki man ana Botaki ni Mwakuri te Tautaeka aika a kakaokoro ibukin Bibitakin Kanoan Boong **Intergovernmental Panel on Climate Change's** (IPCC) Te kaonoua n riboti (AR6) i aon taian Kanganga, Bitakin tein te Maiu ao te Kakai Rotaki

TAIAN BITAKI



**A na kakai rotaki taian kateitei ma ana bwai te botanaomata ni korakoran bwakan te karau ao riki ni korakoran taian angibuaka**

E kona ni kerikaki te kanganga nakon taian kateitei ma ana bwai te botanaomata ngkana a karinaki raraoma aikai n ana babaire ke ana kainibaire te tautaeka



**Unikan te tongo ma tararuakin te bike e kona ni kamanoa mataniwin te aba ma kateitei ao ana bwai te botanaomata**

BITAKIN TEIN TE MAIU

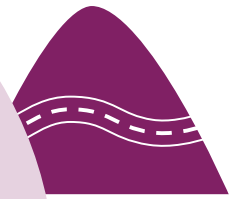


**A na rang rotaki naba kateitei ma ana bwai te botanaomata**

man katautauan keraken rietatan taari



**Tabeaua aanga n irekereke ma bitakin tein te maiu ibukia**



**aomata, kateitei ma ana bwai te botanaomata, mataniwin te aba ma ana otabwanin a kona n ibuobuoki ni kateimatoa te maiu, aron te maiu ma taian kareke mwane ao te otabwanin**

**Karietaan taian maeka ma kateitei ao ana bwai te botanaomata aika a kakawaki a kona naba ni kauarerekea korakoran te ieka**

**BABAIRE IBUKIN TE MWAING NAKO NANON RIKI TE ABA IBUKIN TE MAEKA**

irouia aomata ao kateitei ma ana bwai te botanaomata a kona ni buoka kauarerekean riki taian kanganga aika a kona n riki n taai aika a na roko

# Taian kateitei, ma ana bwai te botanaomata n taabo ni maeka



Taian kukune ibukin te Betebeke man Botakin Aaba n te Aonnaba (te United Nations) Te Rabwata ae e kaainaki man ana Botaki ni Mwakuri te Tautaeka aika a kakaokoro ibukin Bibitakin Kanoan Boong **Intergovernmental Panel on Climate Change's** (IPCC) Te kaonoua n riboti (AR6) i aon taian Kanganga, Bitakin tein te Maiu ao te Kakai Rotaki

**Aanga ibukin bitakin tein te maiu n irekereke ma kateitei ao ana bwai te botanaomata, aomata ma mataniwin te aba ma ana otabwanin a kainanoaki ibukin te tai ae e uarereke ao ae e maan n kaitara ma keraken rietan taari.<sup>1\*\*\*</sup>**

## TERA AE E RIKI

**Bitaki nakon bwabwakan te karau ngaia naba ae e karekei taian ieka ni katoa ririki are a karekei kanganga nakon bwaai ao n urui maiuia aomata ma aia kareke mwane.** Aio are e a tia n rang n riiriki n taabo aika Biiti ao Kiribati.<sup>3</sup>

**A tabe naba n rikirake taian angibuaka n aia karinan aika 4 ao 5 are ngaia ae a rang korakora naba aia urubwai ke kanganga nakon taian kateitei ma ana bwai te botanaomata n te Betebeke.** N aron ae e noraki bwa kanganga n taai aika a na roko, n aron taian urubwai ake a riki man te angibuaka ae Winston n 2016 ike e rotaki iai ana kareke mwane Biiti n te mwaiti ae 20% GdP. I aon Port Vila, Vanuatu, iai naba te mwaing nakon taabo aika a tia ni karikirakeaki aroia ao bitaki nakoia aomata are e a karika korakoran te ieka man te karanga n rokon te angibuka ae Pam n 2015.<sup>4</sup>

**Te aro n tokanikai ni bitakin tein te maiu e nakon aron kabonganana te aba n te aro ae te kabanea n nakoraoki ke n ibuobuoki.** N aron ae, e baireaki katean te bono bwa e na totokoia te kanganga ma e manga aki tau kateimatoan aio ibukin uarereken te kataumwane ai ngaia are e a raoiroi riki ae bon kabonganaki bwain aon te aba bwa a riai riki ibukin totokoan kanganga.

**Te ran, tararuan itiakin roan ao bwaai ni kaitiaki a bane n kakai rotaki ni bibitakin kanoan boong.<sup>2\*</sup>**

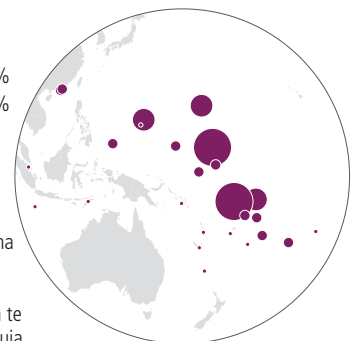
\* = te konabwai ae e bon tau  
\*\* = te konabwai ae e korakora  
\*\*\* = te konabwai ae e rang korakora

## TERA AE E NA KONA N RIKI RIMWI

**E na bon teimatoa ni kerake ao ni korakora rinnakon taari i mataniwin te aba, a na uruaki kateitei ma ana bwai te botanaomata ake a kaan ma mataniwin te aba ao ai taian maeka.\*\*** A kantaningaki ngkai bwa buakan tari ma kanganga nako ake a riiriki mai tari are a kakaoti i nanon 100 te ririki a katautauaki bwa a nang kaoti 20–30 taina i nanon 100 te ririki, e ngae ngkana e aki noraki tinakon te kaeti.<sup>5\*\*</sup> A kantaningaki ngkai bwa buakan tari ma kanganga nako ake a riiriki mai tari are a kakaoti i nanon 100 te ririki a katautauaki bwa a nang kaoti 20–30 taina i nanon 100 te ririki, e ngae ngkana e aki noraki tinakon te kaeti.<sup>6</sup>

**Te korakora, baao ni mwamwananga, te maiu ao te marurung ke taabo ni kuakua ma kateitei ma ana bwai te botanaomata a bane ni kantaningaki bwa a na rotaki e ngae ngkana e uarereke te kabuebue ae e namakinaki ti ngkana e kona ni maiuakinaki te bitaki n tein te maiu.** E ngae naba ma aaba ake a ririeta a kantaningaki naba bwa a na rotaki, aio ibukin mwaitin baao ni mwamwananga ake a bane n uakan ke ni mena i mataniwin te aba, n aron Biiti.<sup>7</sup> A katautauaki naba angia marae ni wanikiba n te Betebeke bwa a na mena i antare ke n taonaki nako n tari n 2100 ma 2°C ma kabuebuena.<sup>8</sup> I rarikin anne, ao bwaai ni mwakuri ma karaobwai a bane ni mena n taabo aika a rinano n te aro are a kakai rotaki naba n rikiraken rietan tari.

Mwaitia aomata n te kateubua ake a mena i aon abamwakoro, a kakai rotaki n rokon tari i mataniwin te aba



Mwaitia aomata n te kateubua n aaba aika a uarereke aika a kakai rotaki (mwaitia aomata i aon te aba aika a kona n rotaki n rokon tari i mataniwin te aba — e ngae ngkana e iara, ke e bwaka i aan are bon rietan te onia) n 2100 i aan te RCP4.5 (e reke te rongorongoro aio mairouia Kulp ao Strauss (2019) ni kabonganana te CoastalDEM\_Perm\_p50 model).

1 SPM.B.6.1	tararuan itiakin raan ibukin	3 15.3.4.2	6 15.3.4.1	8 16.5.2.3.1
2 Nora rongorongoro aika a koaua ibukin "Te ran ao	mauria te botannaomata" ibukin rongorongona riki	4 17.5.1.1.1	7 15.3.4.1	
		5 3.2.2.2		

# AANGA TABEUA NI KAITARAI AIKAI

**E kona ni kerikaki te kanganga nakon taian kateitei ma ana bwai te botanaomata ngkana a karinaki raraoma aikai n ana babaire ke ana kainibaire te tautaeke.** N aron ae, karaoran iango ma babaire aika a riai i aon taian waaki ni karikirake n taabo ni kaneweaba, katanan mataniwin te aba (totokoan taian karikirake aika a na karaoaki i mataniwin te aba riki n taabo ake a kai rotaki n te kanganga) ao tuon taabo ke te enwaromenta aika a kai reke n te kanganga. A na kamatoaki naba kanikina (codes) are a na kona ni kaotia bwa a kai rotaki kateitei n te kanganga man rikiraken rietan tari n te aro are a na aki kakai rotaki karikirake aika a boou ni kanoan te bong n taai aika a na roko.

**Babaire i aon 'taabo ni maeka'<sup>9</sup> n aron karietaan taian maeka ao kateitei ma ana bwai te botanaomata n aron karietaan kawai man te aba riki ake a biri i mataniwin te aba bwa kaurerekean te kanganga ae e katautauaki ni kanoan te bong ma iriana te urubwai ae e korakora.** N aron ae, a tia n rotaki n te ieka mweenga ae e nakon 48 ao 98% man 1980 n taabo ake a maekanaki i aon Tuamotu, i Buranti Borenitia, a bane n tia ngkai ni karietaki autina n te rieta ae 1.5 te mita bwa aia anga ni boutoka te bitaki nakon tein te maiu.<sup>10</sup>

**E a tia ni waaki kaamwarakean aon te bike (manga kabwaraon te tano i aon te bike) n aaba tabeua aika a uareke bwa kauarerekean te kanaki ke totokoan te uruaki nakon ana bwai te botanaomata (n aron te kawai) riki ake a mena n taabo aika a kakai rotaki n te kanganga.** Aio, n ikotaki ma aanga tabeua ake a bon kabongana bwain te aba n aron unikan te tongo bwa e na riki bwa te totoko (n aron te bono) ibukin kamanon mataniwin te aba. E ngae n anne, ao aaba aika a karako tanoia a kona ni manga karekei kanganga ao/ke a karikirakea te urubwai nakon te otabwanin ngkana a kabonganaki n akea te karaourau. Irarikin anne, kabonganana bwain te aba a kona ni manga rotaki ni korakoran bibitakin kanoan boong.<sup>11</sup>

**Te mwaing nakon taabo ke aaba tabeua ibukin te maeka, e a rang rikirake n aaba aika a uareke are ai bon taian waaki ni katauraoki ke ni kaitara bibitakin kanoan boong.** N aron ae, ana mwaing Kiribati ae te "Migration with Dignity" e boutoka raoki babaire ibukin mwaingia ana botanaomata nako aban tinaniku. E ngae n anne, ao e korakora tangiran abaia ma taian nano kokoraki ibukin te maiu n taabo ake a na mwaing nako iai are nanona bwa e bati aika a tuai tauraoki n mwaing ke ni kitana abaia. Taan boutoka te mwaing ao bairean nanoia aomata bwa tao a na mwaing, a na nakea, n ningai ao ni kanga bon ngaia baika a kakawaki ibukin kakororaon raoki nanon te iango aio.\*\* Irarikin riki anne, ao te mwaing i nanoa kanga e tangiraki riki nakon te mwaing nako aban tinaniku.

## Aroaro n taai aika a na roko

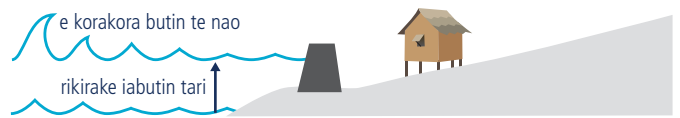
Kauarerekean te maeka ibukin rikiraken: rikiraken iabutin taari, korakoran te nao, te kanaki, te ieka ao angibuaka. A rota te botanaomata n ikotaki ma kateitei ma ana bwai te botanaomata [15.3.4.9.2]



## Kawakinan te otabwanin



## Kamatoan kawakinana



## Te tabo ni maeka (n aron, karietaan taian maeka)



## Bairean te mwaing



### Taian kaeka

A karaoa aia babaire kain te kawa teuana i aon Biiti ae Vunidogoloa bwa a na mwaing ibukin rorokon tari n aia tabo ni maeka n tain te onia. A tia ni karaoi tabeua aanga n 'totoko' n aron, katean taian bono, ao 'taabo ni maeka' n aron karietaan taian auti ma a aki kona n totokoa ana urubwai te ieka are e aki toki n riiriki nakon taian kateitei ao te kawa ngaia are a bane ni mwaing nakon te tabo ae bon abaia naba aia bakatiku bwa ai te kabanea ni babaire anne ibukin bitakin tein maiuia. [15.3.4.6]

### Kaeka aika tangira te kakamwakuri

N te kawa ae Navunievu i aon Biiti ao e a tia ni kamatoaki bwa a na katea mwengaia koraki aika a kairake n taabo aika a rietana ao a karaabe ma tiaki n te tabo are e roroko iai te ieka are e mena iai ngkai te kawa. I nanon irabwi ririki ma ngkai, aio are e na riki bwa te mwaing ni maeka n te karabe ae rietana irouia kain te kawa, te banna ibukin bitakin tein te maiu ae e bon baireia ke e rinea te aomata bwa e na karaoia. Aekaki n iango aikai — bon iango aika a maiu ibukin kakaeen totokoan te kanganga ae e tara n rang ibuobuoki ibukin bitakin tein te maiu n taai aika a na roko n aaba aika a uareke. [FAQ 15.2]

9	Ikai, 'te tabo ni maeka' e kanaanaki bwa aanga ibukin te bitaki nakon tein te maiu ike a manga kabouaki aron tein	kateitei ma ana bwai te botanaomata n irekereke ma kanoan te bong, ike a na bon teimatoa n tiku aomata n taabo ake e roroko iai te ieka.	10 15.5.2 11 15.5.4 12 15.5.3
---	---	--	-------------------------------------