

# CLIMATE AFFECTED COMMUNITIES PROJECT



Australian  
National  
University

# Our Team



**Dr Annabel  
Dulhunty**



**Professor  
Kuntala Lahiri-  
Dutt**



**Ms Sukanya  
Banerjee**



Local NGOs including Sudhu  
Sundarban Charcha



**Australian  
National  
University**

Advisory Board:

Coral Bell School of Asia  
Pacific Affairs, Fenner  
School of Environment &  
Society



## The Problem and the Region

### The Sundarbans, India

#### Experiencing Climate Change

- Climate change has radically altered the lives and livelihoods of communities in the Sundarbans, the mangrove-forested coastal Delta, straddling India and Bangladesh.
- **Ghoramara Island** is an island in the Sundarbans region which is expected to be **fully submerged by 2050**.

#### Adaptation Strategies and Best Practices

- Examining **adaptation strategies** for climate affected communities, particularly women and disadvantaged groups (people living with disabilities, the elderly, minority groups).



## Project Aim:

**To address whether climate change impacts individuals differently based on gender, disability and social inclusion and to determine how adaptation strategies can best meet the needs of these individuals?**

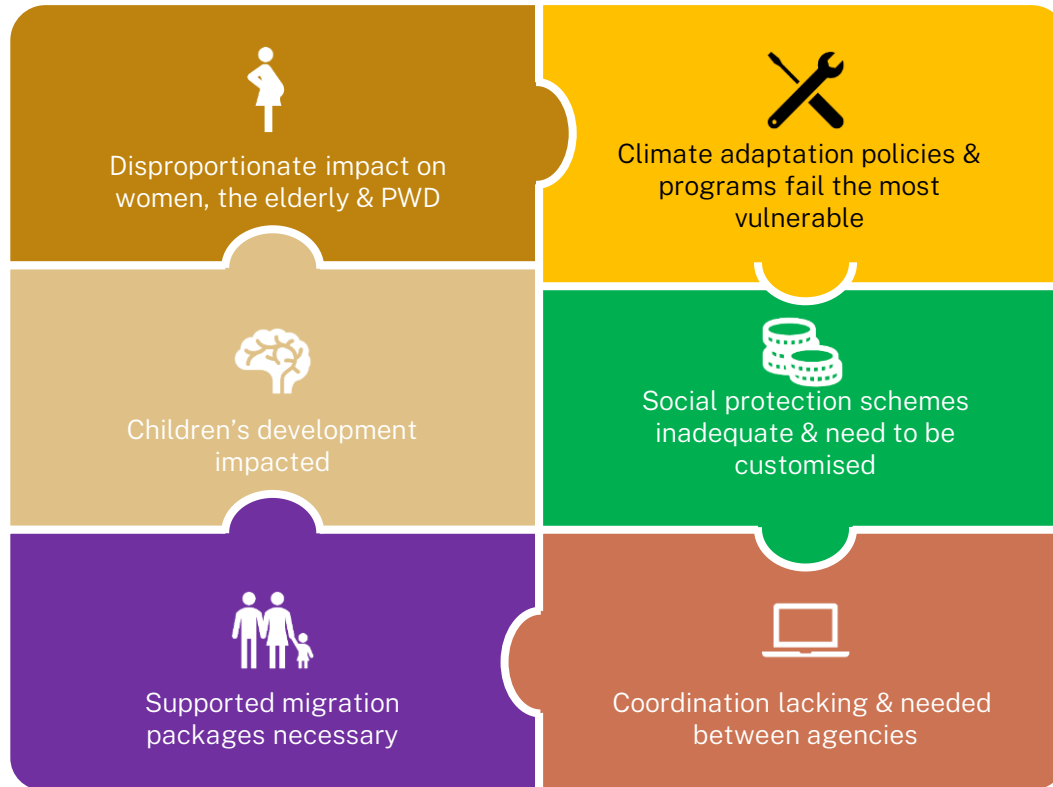
In-depth qualitative interviewing with at least 60 of the most disadvantaged community members

Undertook multi-scalar analysis of the situation

Used Photovoice with vulnerable women to document their experiences of climate change



# Core Findings

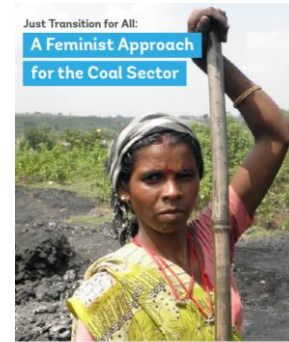
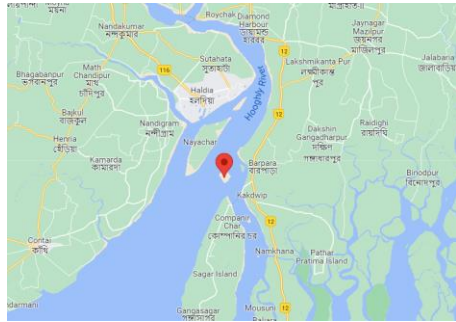
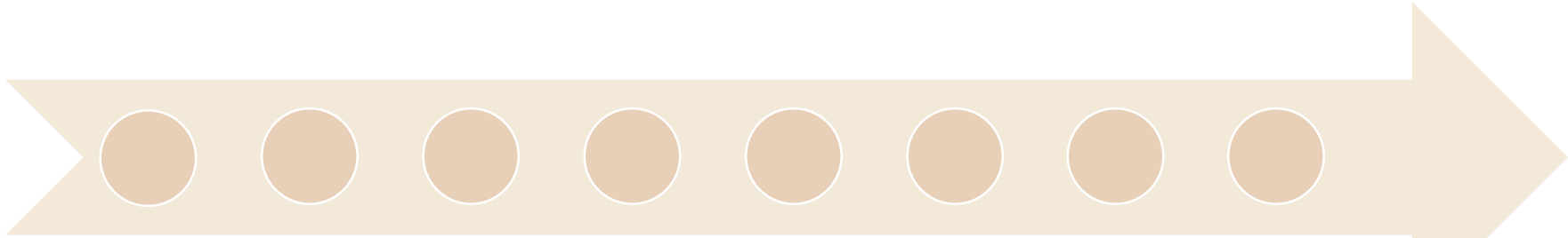


# Phase 2

Geolocation & scientific report

Comprehensive household survey

Develop and test toolkit & training



EGPS THE WORLD BANK



# The Three Phases of the Project

This evidence-based work will have implications for climate policy and action.

## Phase 1

In-depth qualitative research

## Phase 2

Quantitative survey, toolkit, training and geo-mapping

## Phase 3

Comparative analysis with other climate affected areas

# Contact Us

Annabel Dulhunty

[annabel.dulhunty@anu.edu.au](mailto:annabel.dulhunty@anu.edu.au)



Australian  
National  
University