



Carbon Offsets: Potential vs Reality

Andrew Macintosh

The potential of carbon offsets

- **What are they?**

Party A gets credits for reducing GHGs, which can be sold to allow **Party B** to increase its emissions (or not reduce them as fast).

- **What is the benefit of offsets?**

Reduces the economy-wide costs of achieving GHG reduction targets.

- **Why?**

- Gains from trade
- Co-benefits

Reality

Highly controversial – why so

- Benefits are contingent on ‘integrity’ = credits must represent **real** and **additional** abatement
- Evidence suggests they rarely do (generally >70% low integrity) = GGAS, CDM, JI, California, Verra (VCS), ERF

Why do they fail?

Scheme administrators are incentivised to focus on supply, not integrity

Result: They forget the basic rule of offsets

Rule: carbon credits should only be issued where high confidence they represent real and additional abatement

Why?: Offsets are a **high risk environmental instrument:**

- Easy to get it wrong and issue low integrity credits because estimating abatement relative to a counterfactual is hard
- If credits have low integrity and they are used by polluters to offset emissions, it increases emissions & thereby results in worse outcomes

Other key factors

Adverse selection: difficulty in restricting participation to ‘additional activities’

Adverse selection = circumstances where asymmetry of information prompts selective participation to the detriment of objectives

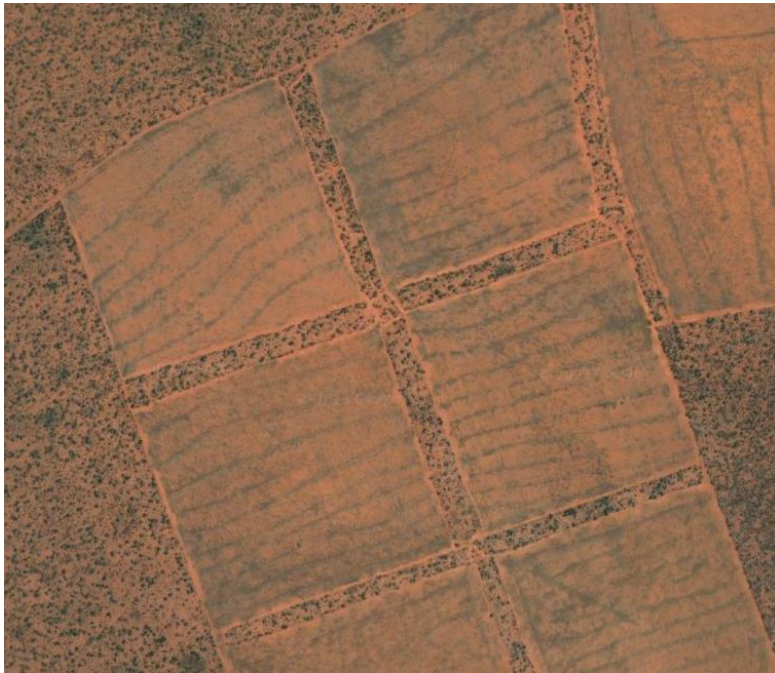
Legal corruption: cosy relationship between intermediaries and regulators creates loopholes in design and administration

Environment cheer squad: green groups want to believe and cheer it on “because we need to get money to the [forests/rangelands etc.], however we do it”

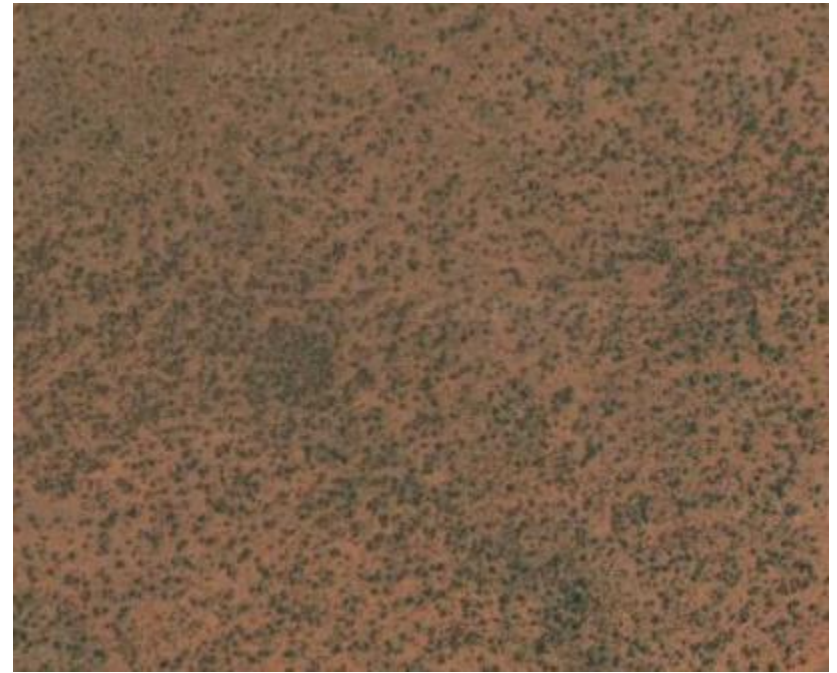
What does failure look like?

Human-induced regeneration of even-aged native forest

Project start



Project finish



Reality

Project start

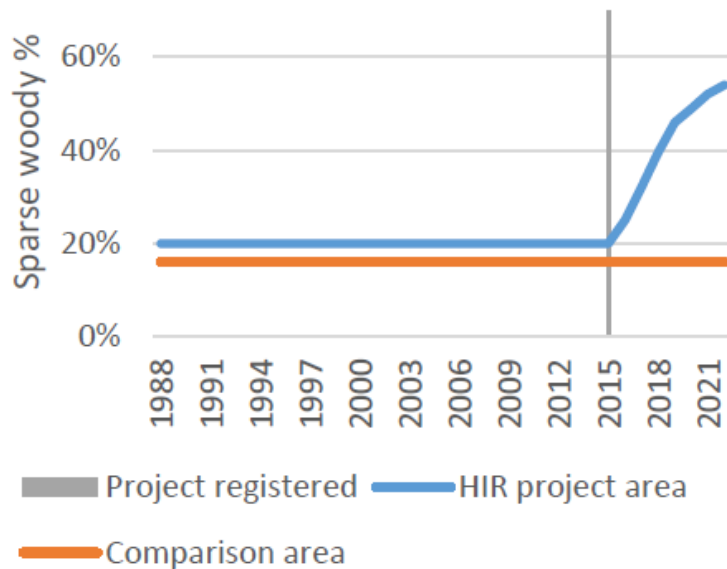


Project finish?

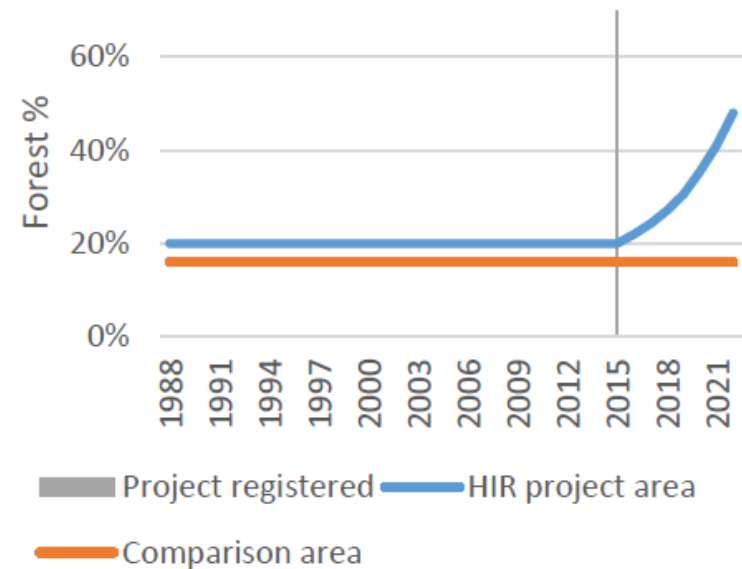


What should we see in HIR project areas vs comparison areas?

(a) Sparse woody cover %

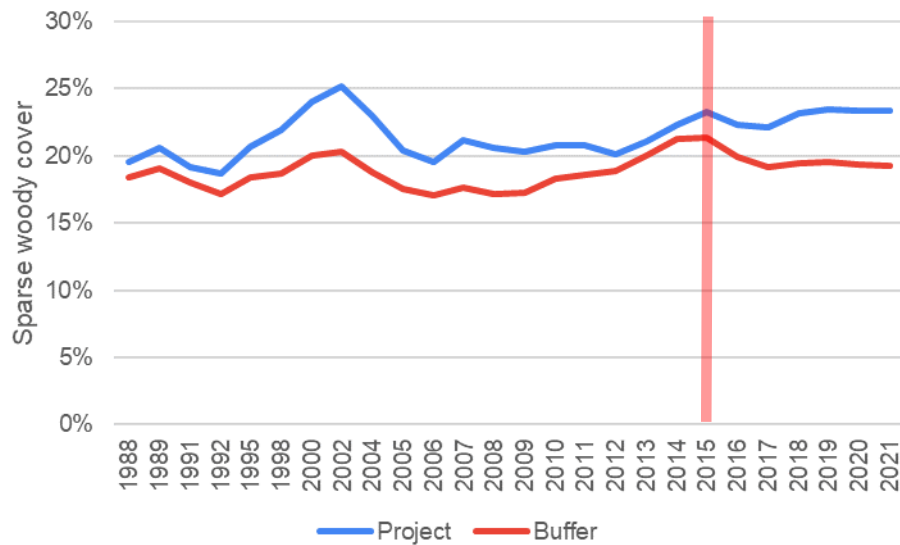


(b) Forest cover %

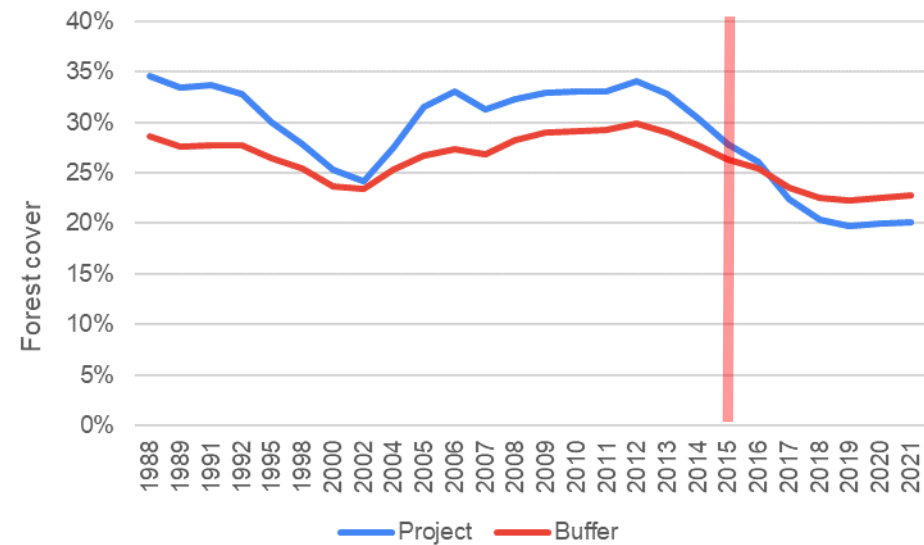


What do we see in HIR project areas vs comparison areas?

Sparse woody cover



Forest cover



How do we fix this?

Let 3rd parties into the game – participation, transparency and access to justice