

INSTANTANEOUS DETECTION OF HIGH-RISK-LIGHTNING WITH PINPOINT ACCURACY

Marta Yebra*, **Colleen Bryant**, Geoff Cary, Li Zhao, Itsvan Kereszy, Rachael Nolan and Matthias Boer

*Director, ANU-Optus Bushfire Research Centre of Excellence

Fenner School of Environment & Society

School of Engineering



@myebra12



Australian
National
University

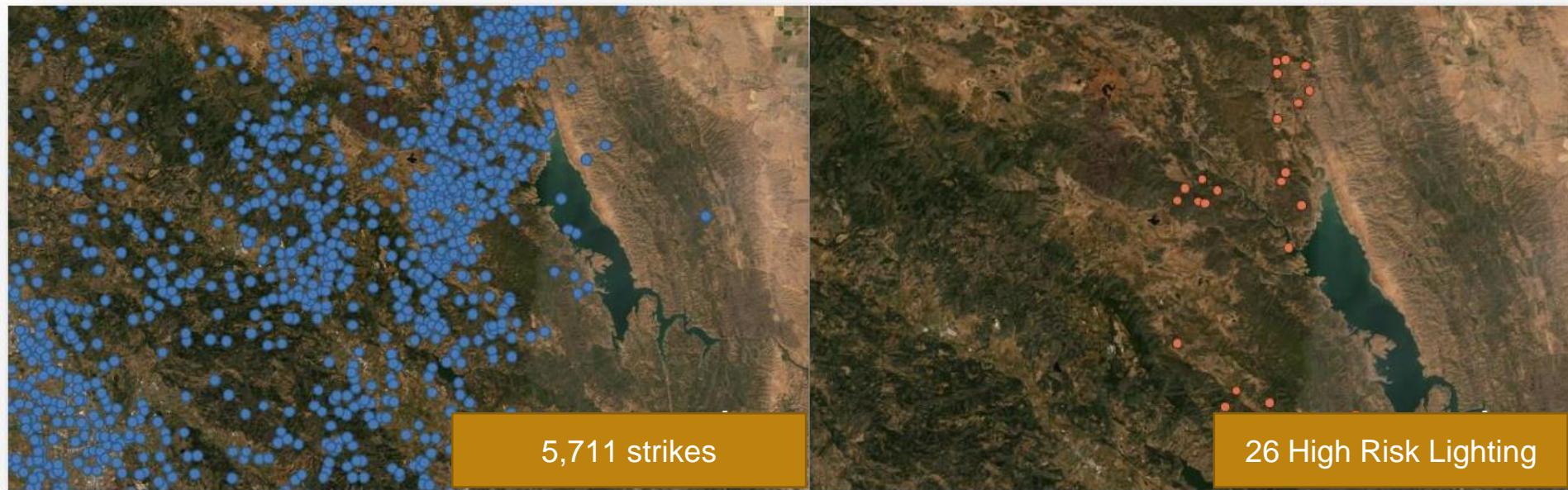


The complexity of lightning strikes



Rapid identification of High Risk Lightning

Specific lightning strikes at greatest risk of causing ignition to immediately confirm ignition and dispatch fire suppression resources



6 of the high risk strikes started a fire